

YOUR FIRE DEPARTMENT

Clallam County Fire District #2 (CCFD #2) and Port Angeles Fire Department (PAFD) provide fire protection and emergency medical services to an area of approximately 98 square miles. These departments include the area from Deer Park Road to East Beach Road on Lake Crescent. Approximately 35,000 people live within the borders of the District and the City of Port Angeles.

CCFD #2 and PAFD provide advanced life support services (Paramedics) to this area (District 2 with volunteers, and paid/career Paramedics with the City). CCFD #2 and PAFD meet the emergency service needs of the District from 6 fire stations. The main office of the District is located at PAFD on E 5th ST. and is staffed by the Fire Chief, Deputy Fire Chief and the District Secretary. PAFD is located on E. 5th St. and is manned with 21 career personnel. The other stations are all staffed by volunteers and are, as such, unmanned. The District stations include Sta. 21 at Gales Addition, Sta. 22 at Dry Creek, Sta. 23 at Black Diamond, Sta. 24 at Lake Sutherland, and Sta. 25 at Deer Park. Station 21 and Station 25 personnel join volunteers for responses in their areas, as do Stations 22, 23, and 24 in their areas.

In 2007, CCFD #2 responded to over 1000 calls for assistance. PAFD responded to 3700 calls for service. Those alarms included structure fires, medical calls, brush fires, car accidents, reports of wires and/or trees down, vehicle fires, false alarm soundings and other service calls.

For more information about joining the volunteer program please contact:

Clallam County Fire District #2

PO Box 1391

Port Angeles, WA 98362

(360) 452-7725

Or

Port Angeles Fire Department

102 E 5th Street

Port Angeles, WA 98362

(360) 417-4655



Volunteer Program



Be A Part Of Our Team

Clallam County Fire District Two/
City of Port Angeles Fire Department

Brochure designed by Eva Tallmadge
Photos courtesy of Mike DeRousie and
CCFD #2

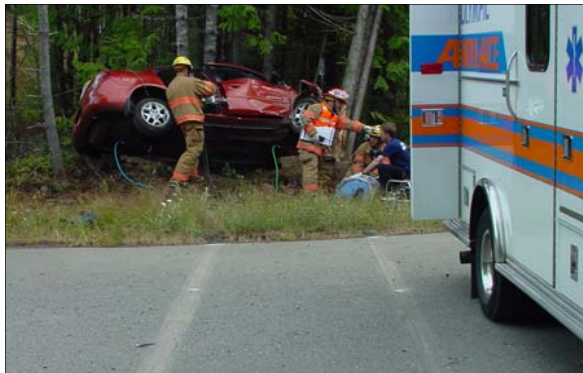
Support Your Community...

VOLUNTEER!

Port Angeles Fire Dept. and Clallam County Fire District #2, have a long tradition of volunteerism. The nation's first fire departments, established well before the founding of the United States, were staffed by members of the community who volunteered their time in service of their neighbors. Although Port Angeles Fire and Clallam County Fire District #2 have evolved to meet the demands of our growing community, volunteers remain a critical part of our operations.

Community Service

At both Clallam County Fire District #2 and Port Angeles Fire our primary mission is the protection of lives and property. We recognize that our agencies are funded through tax dollars, and that each one of us is accountable to the public. So, achieving our mission involves more than fire prevention and public education; it requires a deep commitment to community services.



Benefits and Rewards

Every day, our members are involved in activities that make a difference in people's lives. Whether their actions include teaching children about fire safety, fighting fires, performing CPR, or supporting the teams who provide those functions, fire department personnel gain great satisfaction from their work.

There are other benefits to service. Members receive training and continuing education. And, while many volunteers are motivated only by their interest in serving the community, some members view their participation as a foundation for a fire service career. Port Angeles Fire and Clallam County Fire District Two have established reputations of success in this arena; many of our members have utilized the experience gained with our departments to start careers in emergency services.

Commitment

Fire department membership, while exciting and rewarding, requires a significant commitment from the volunteer and his/her family. Driven by our departments' emphasis on firefighter safety and quality service, many hours of initial training are required before a member can respond to calls.

Once qualified, volunteers are expected to maintain their qualifications by attending drills and answering alarms on a regular basis.



Training Requirements

<u>Position</u>	<u>Initial</u>	<u>On-Going</u>
Firefighter	110 hours	at least 8 hrs/month
EMT	114 hours	at least 3 hrs/month

Getting Involved

Volunteer positions are available in a variety of areas: firefighting and/or emergency medical services, fire prevention and public education.

We'd be happy to answer your questions about the fire department and the opportunities within the organization. Call our headquarters station at (360) 452-7725 or PAFD at 417-4655 during Business hours for additional information.

